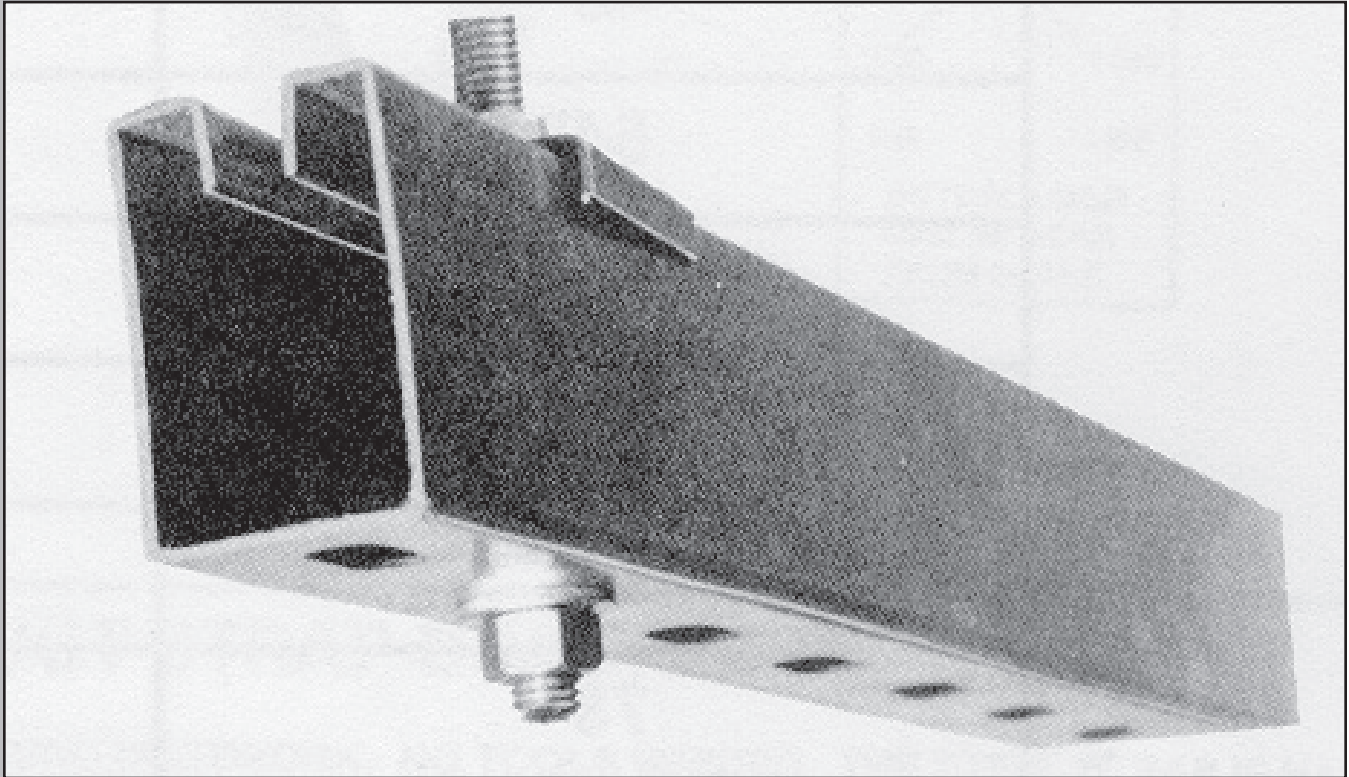


Trapeze Duct Hanger



Specialized Duct Support Channel

Fast, No Waste, Cost Effective!

- Hot-dipped galvanized
- Eliminates hard to cut and punch angle iron
- Ship directly to job site
- Easy to cut
- Lightweight
- Neat, professional appearance



Trapeze Duct Hanger

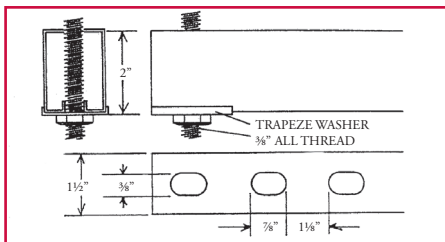
Specialized Duct Support Channel

DESCRIPTION

Pre-punched channel section for supporting rectangular or oval ductwork.

SPECIAL CHARACTERISTICS

- 18 gauge galvanized, 20' lengths 2" high x 1 1/2" wide. Oval holes punched 2" on center.
- Easy to cut, light in weight, low in theft
- Neat professional appearance
- Eliminates the hard to cut and punched angle iron, and painting of same, when applicable. Nothing is done in the shop, ship directly to jobsite for immediate use.
- Highly competitive in pricing to 2"x2"x1/4", 2 1/2"x2 1/2"x1/8", 2"x2"x3/16" black angle iron, galvanized iron, or unistrut when all is considered.
- Versatile enough to standardize, thus possibly replacing several other types of hangers, reducing inventory cost.



INSTALLATION INSTRUCTIONS

1. Cut trapeze duct hanger to size.
2. Slide all thread through pre-punched oval holes. Slide on washer (included with each bundle), tighten nut.
3. Space hanger rods according to load chart below:

TRAPEZE LOAD CHART		
L	d=2 inches P (lbs)	*d-6 inches P (lbs)
18"	1100	850
24"	1100	850
30"	1100	840
36"	1100	830
42"	1100	810
48"	1100	780
54"	1100	735
60"	1100	680
66"	1100	600
72"	1100	520
78"	680	400
84"	190	275
96"	---	---
108"	---	---

L= Distance between hanger rods.

d= Distance between hanger rods and duct wall. Above tables assume duct is centered between hangers.

P= Total weight of duct including reinforcements, connections, insulation, etc.

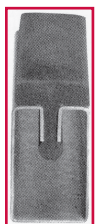
NOTE: For d greater than 2 inches, the 6 inch table MUST be used.

See page 5.14 fig. 5-6 of the 2005 SMACNA HVAC Duct Construction Standards - metal and flexible for calculation method.

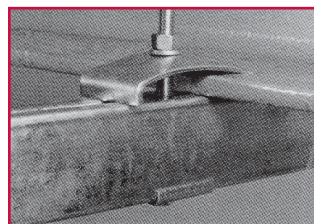
* This table is similar to table in SMACNA in that it assumes a 6" space between duct and hanger rod.

PACKAGING INFORMATION

Part No.	Packaging Unit	Bundle Weight
TRAP03GA	300' With 75 Washers	360 Lbs.
TRAP05GA	500' With 125 Washers	600 Lbs.
DM2735AS	100 Pieces	12 Lbs.
TBCLAMP	100 Pieces	48 Lbs.



Heavy neoprene pads can be inserted into the hanger profile if sound insulation is required.



Beam clamp fastens hanger profile to structural members up to 1 1/2" thick.

LIMITED PRODUCT WARRANTY

Ductmate warrants that the Trapeze Duct Hanger, when properly installed and maintained, will be free from defects in material and workmanship, and will comply with all written specifications made by Ductmate at the time of sale. Ductmate's warranty shall run for a period of one year from the date of manufacture.

Warranty Limitation

The warranty stated above is in lieu of all other warranties, express or implied, including but not limited to the implied warranties of MERCHANTABILITY AND FITNESS FOR A PARTICULAR PURPOSE. Although Ductmate may have suggested the product, or provided written or oral advice to the Purchaser, it is the Purchaser's responsibility to test and determine the suitability of Trapeze Duct Hanger, for the intended use and purpose, and Purchaser and/or its customer assumes all risk and liability whatsoever regarding such suitability.

Limitation of Liability

In the event of a breach of the above warranty, Ductmate's sole obligation, and Purchaser's sole and exclusive remedy, shall be, at Ductmate's option, repair or replacement of any defective products, or refund of an applicable portion of the purchase price. Ductmate shall have no liability for costs of removal or reinstallation of the product. The Purchaser agrees that no other remedy, including but not limited to loss of profits, loss sales, injury to person or property, or any other special, incidental or consequential damages, shall be available to the Purchaser for any claim arising out of this Agreement, regardless of whether such claim is made in contract or in tort, including strict liability in tort. In no event will Ductmate be obligated to pay damages to the Purchaser in any amount exceeding the purchase price that the Purchaser paid to Ductmate for the allegedly defective product.



Charleroi, PA
210 Fifth Street
Charleroi, PA 15022
724-258-0500

Lodi, CA
810 S. Cluff Avenue
Lodi, CA 95240-9141
209-333-4680

Additional Manufacturing and Warehousing in
Monongahela, PA and Wagoner, OK

1-800-245-3188 • www.ductmate.com

© Copyright Ductmate Industries, Inc. All rights reserved.



Ductmate Is A Proud Member Of The Following Organizations:



Distributed By: